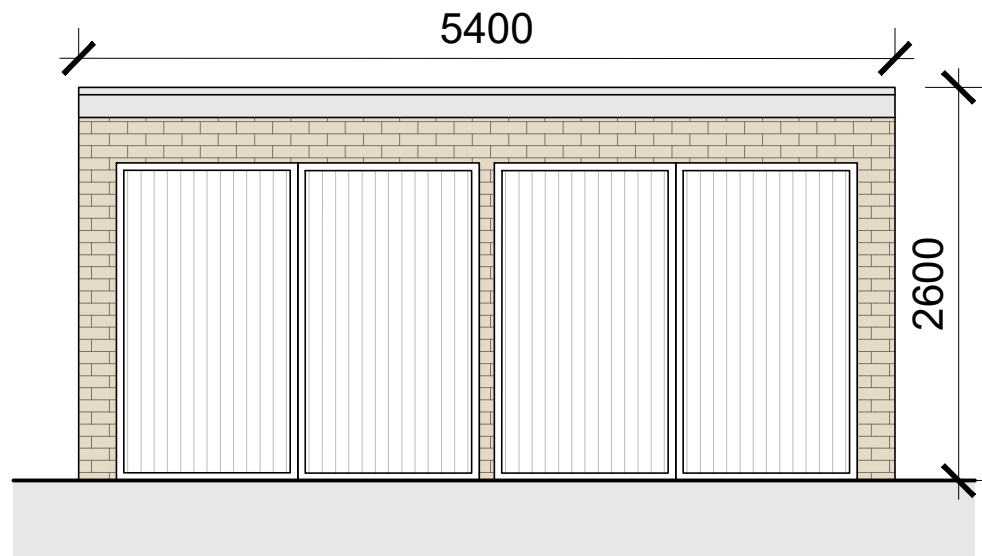
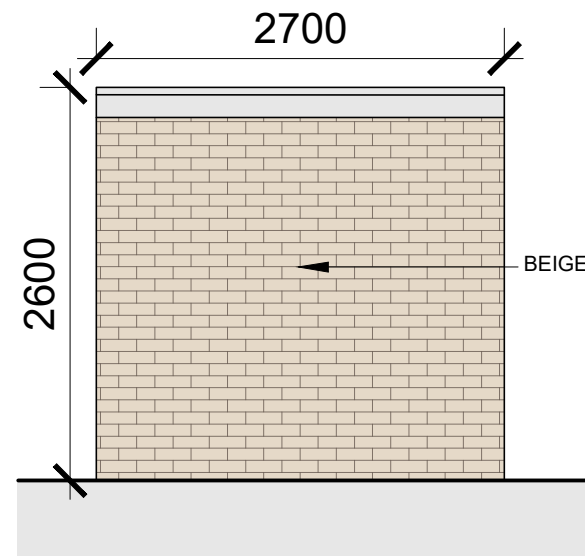


DO NOT SCALE. WORK TO FIGURED DIMENSIONS ONLY.  
ALL EXISTING DIMENSIONS TO BE CHECKED ON SITE.  
DRAWN ON AUTOCAD R2004 AT DEADY GAHAN ARCHITECTS LTD  
LAYERS ON THIS DRAWING COMPLY WITH BS 1192: PART 5



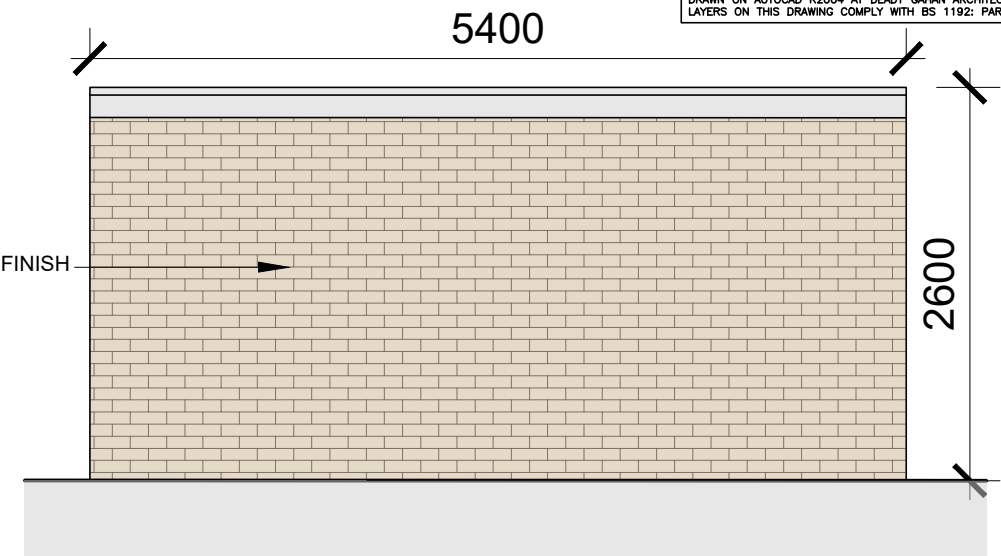
FRONT ELEVATION

SCALE 1:50 @ A3



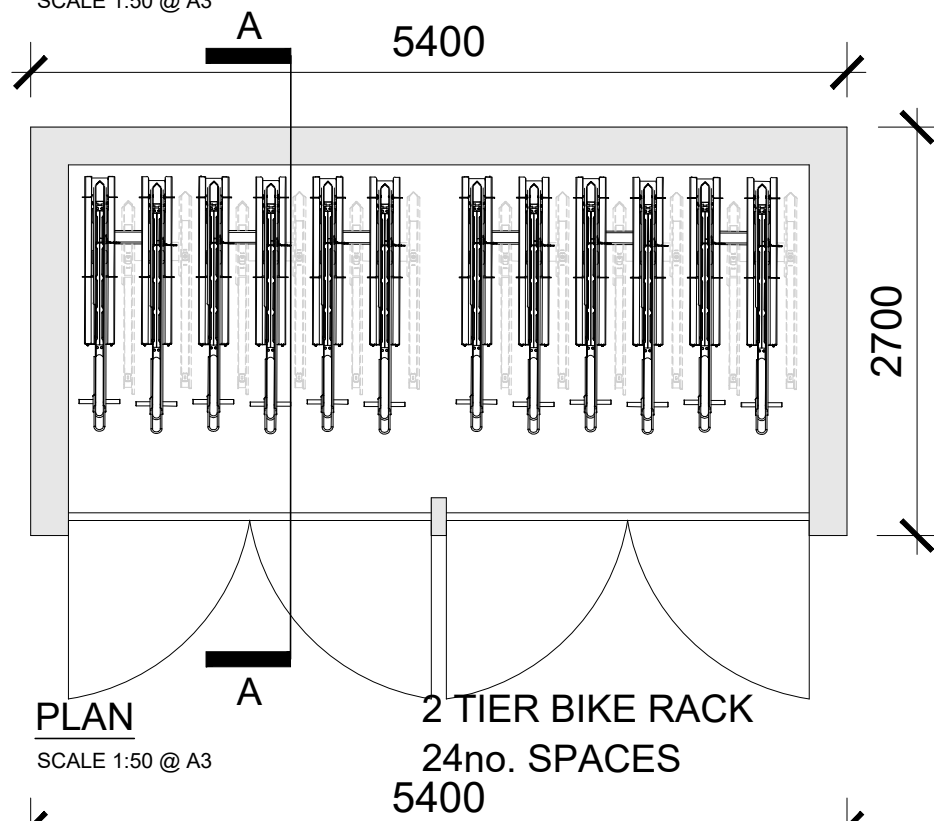
SIDE ELEVATION

SCALE 1:50 @ A3



REAR ELEVATION

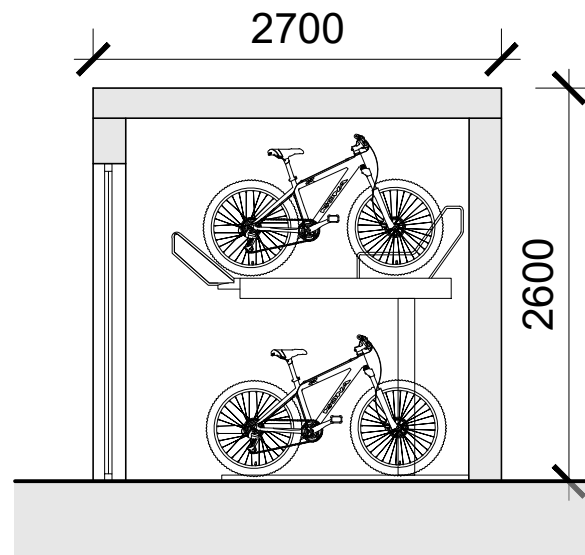
SCALE 1:50 @ A3



PLAN

SCALE 1:50 @ A3

2 TIER BIKE RACK  
24no. SPACES  
5400



SECTION A-A

SCALE 1:50 @ A3

T5

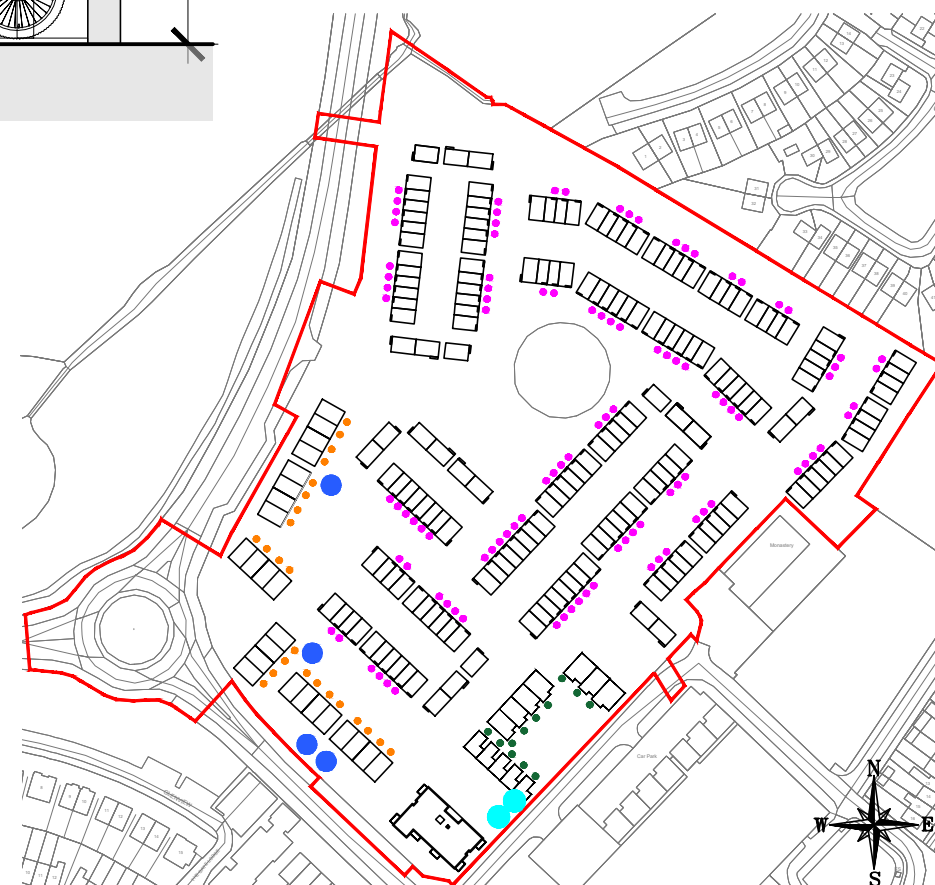
Bike stores T5 shown

**Note**  
Please refer to Site Plan (drawing  
no. 23072/P/003) for orientation.



2 TIER SYSTEM IMAGE

NTS @ A3



KEY PLAN (BIKE STORE LOCATIONS)

NTS @ A3

BIKE PARKING SCHEDULE

**2 Bed Mid Townhouse Units**  
(1 space per bedroom) - 206no. bike spaces required  
\*Detached, Semi-detached and End Townhouse units have direct  
access to allocated GF private amenity space and can utilise this for  
bike storage.

T1 103 X 2no. spaces (Secure)

Total = 206no. spaces

\*\*Meets standards set out in the 'Sustainable and  
Compact Settlements' Guidelines 2024

**1 Bed GF Apartments**  
(1 space per bed + 1 space per 2 Apt units)  
-36no. bike spaces required

T2 48no. spaces provided (Secure)

**3 Bed Duplex Apartments**  
(1 space per bed + 1 space per 2 Apt units)  
-84no. bike spaces required

T3 88no. spaces provided (Secure)

**2 Bed Later Living Units**  
(1 space per bedroom)  
-24no. bike spaces required

T4 24no. spaces provided (Secure)

\*\*Meets standards set out in the 'Sustainable and  
Compact Settlements' Guidelines 2024

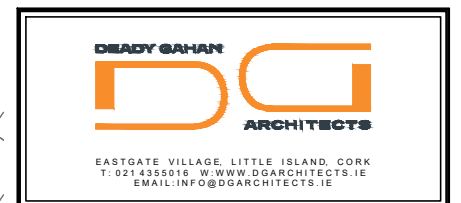
**1 & 2 Bed Later Living Apartment Units**  
(1 space per bed + 1 space per 2 Apt units)  
-48no. bike spaces required

T5 48no. spaces (Secure)

**TOTAL BIKE PARKING PROVIDED = 414no.**

\*\*The apartments meet the standards set out in the 2023  
Apartments Guidelines

date	rev	name	chk	note
03.10.24	P1	PC	EJG	ISSUE FOR PLANNING



Project  
PROPOSED MIXED-USE DEVELOPMENT  
AT BLESSINGTON  
CO. WICKLOW

Drawing title  
PROPOSED SECURE BIKE STORE T5

Scale 1:50 @ A3	Drawn PC	Checked EJG	Date 25.07.24
--------------------	-------------	----------------	------------------

Project No. 23072	Drig. No. 23072/P/011B	Revision P1
----------------------	---------------------------	----------------

☐ Information \ Comments ☐ Tender  
☒ Planning ☐ Construction

PROPOSED SECURE BIKE STORE T5 - 24 BIKES

SCALE 1:50 @ A3