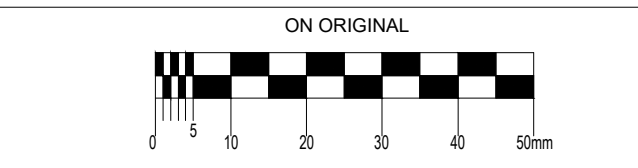
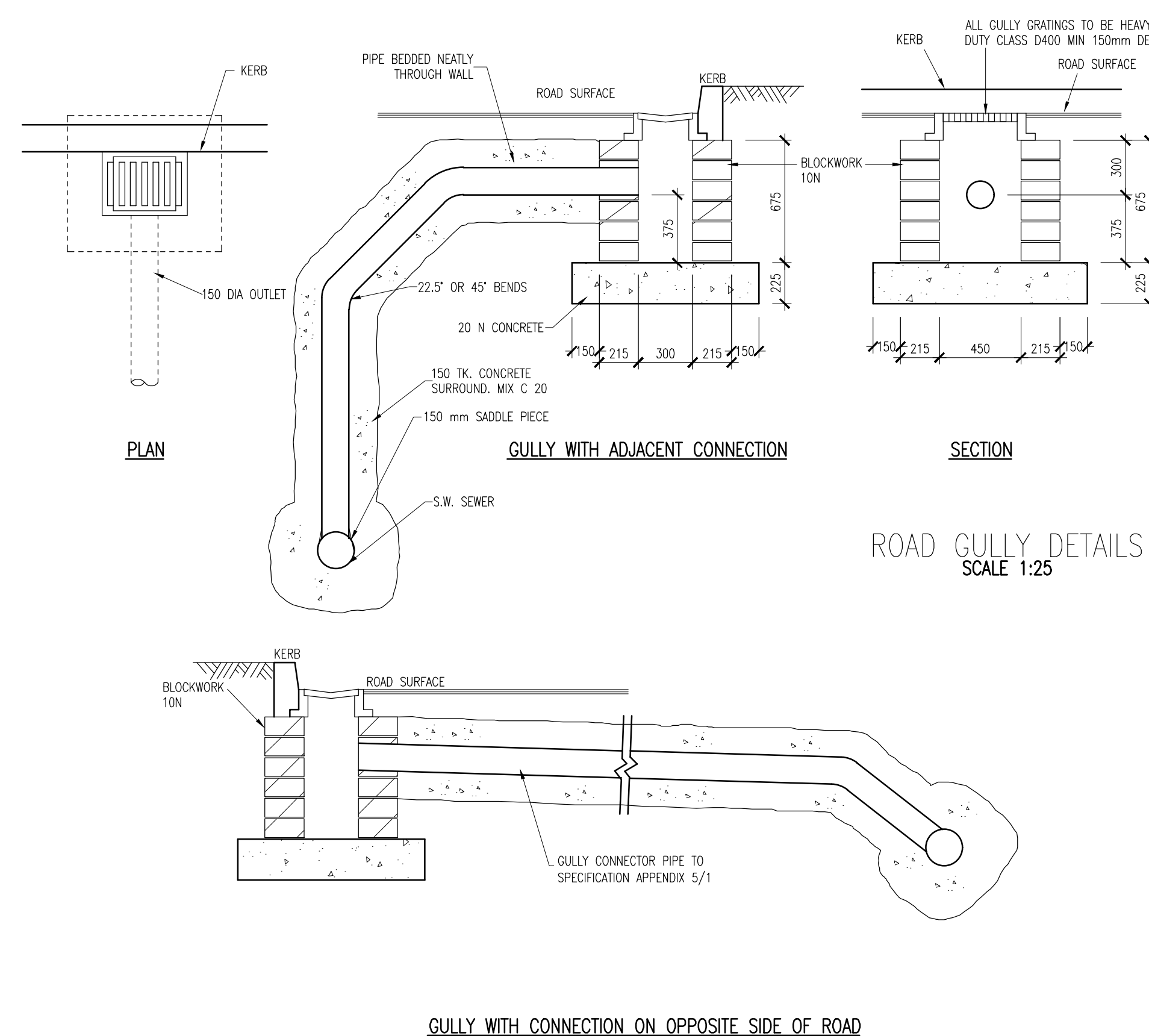
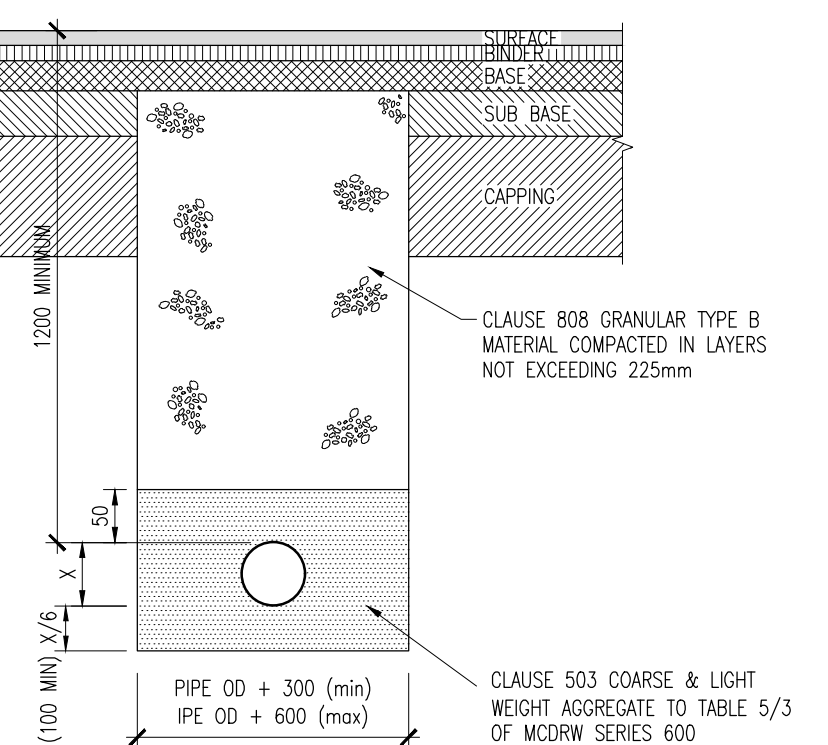
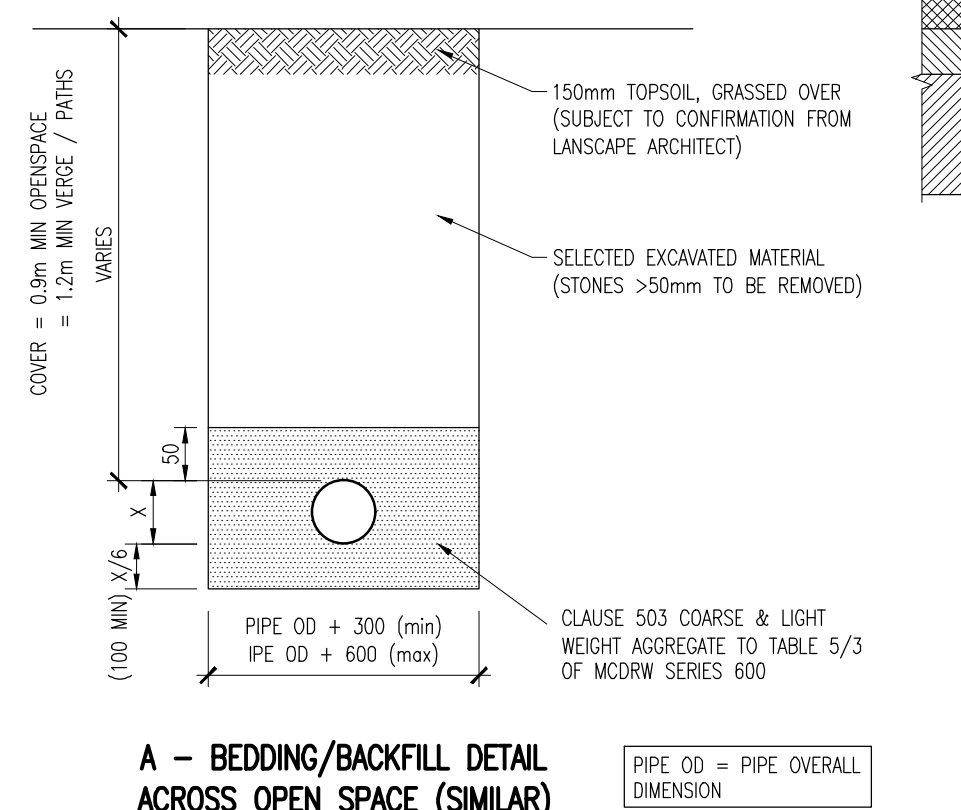
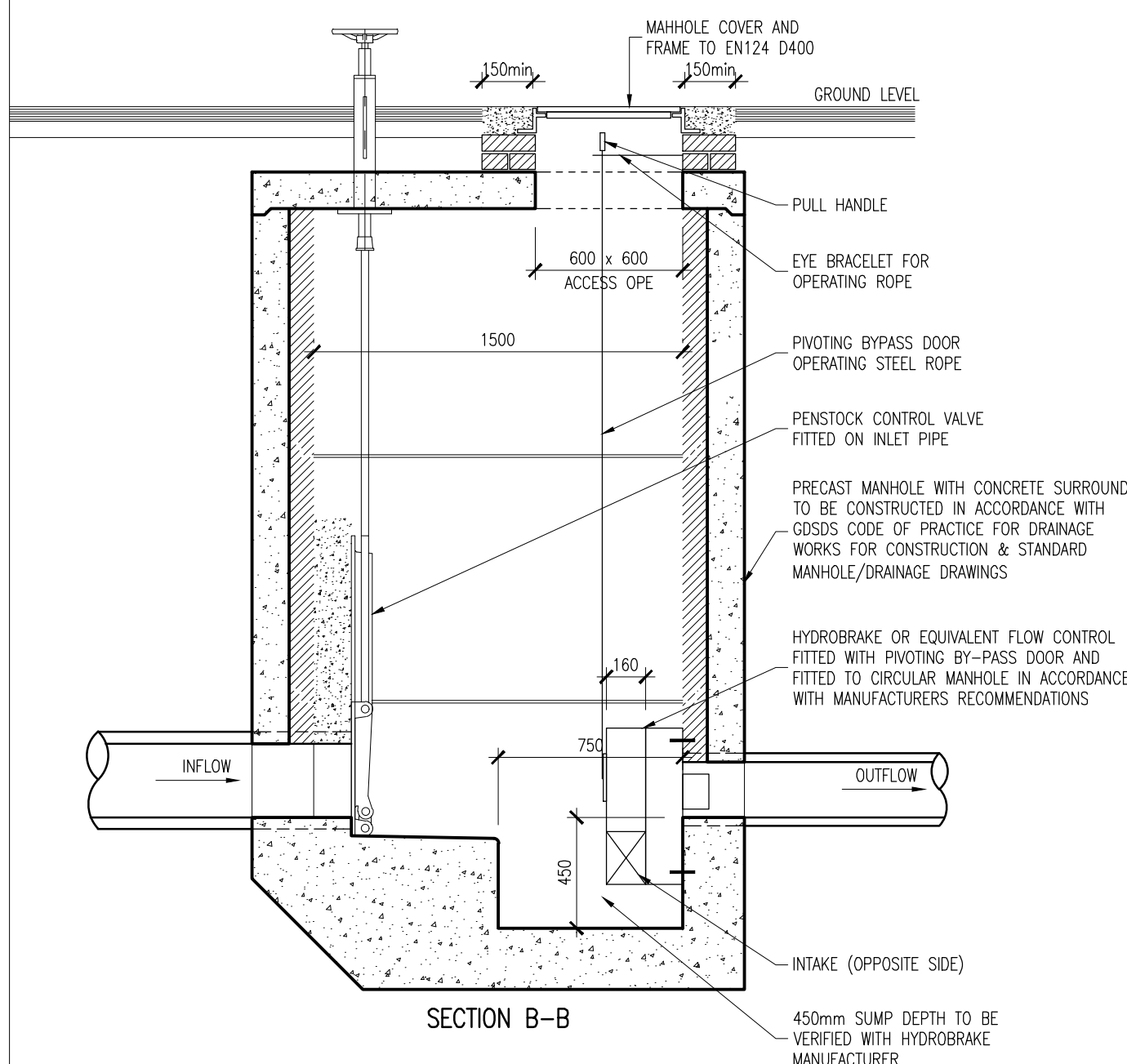
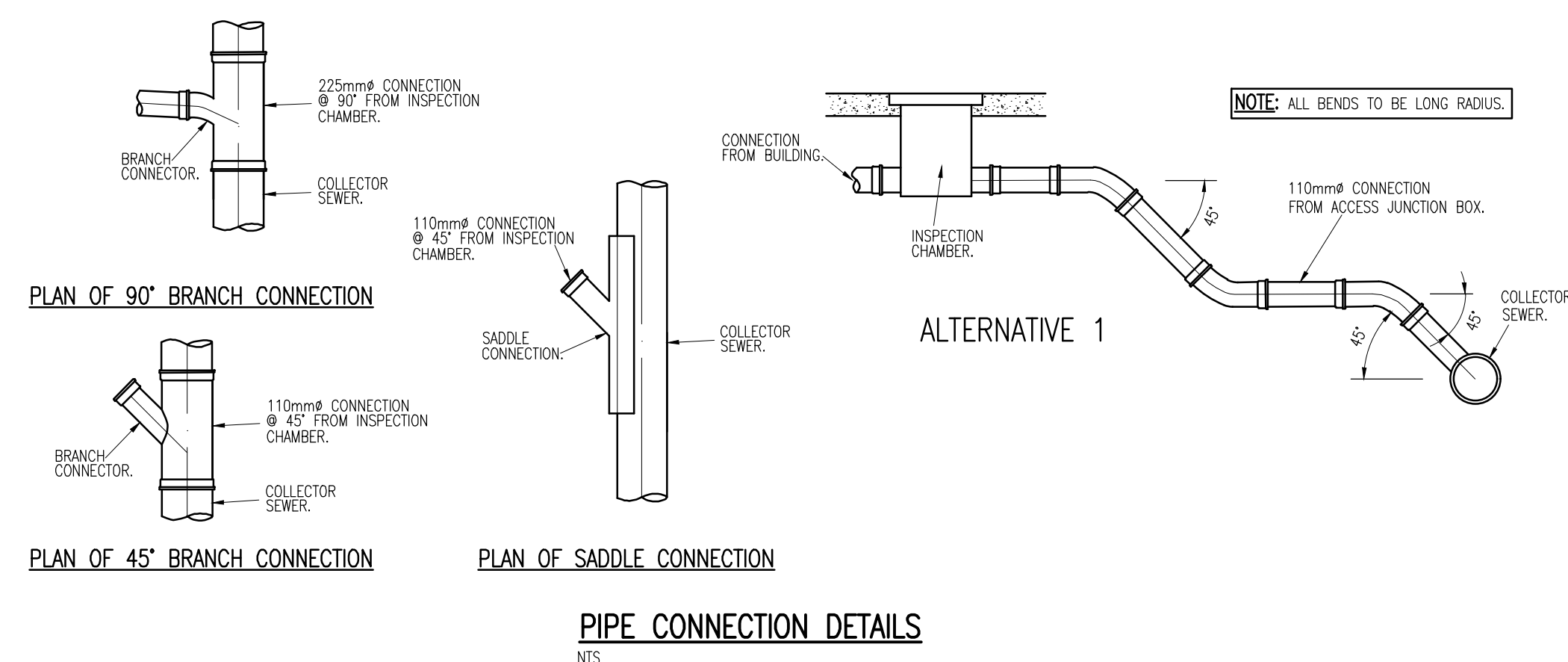
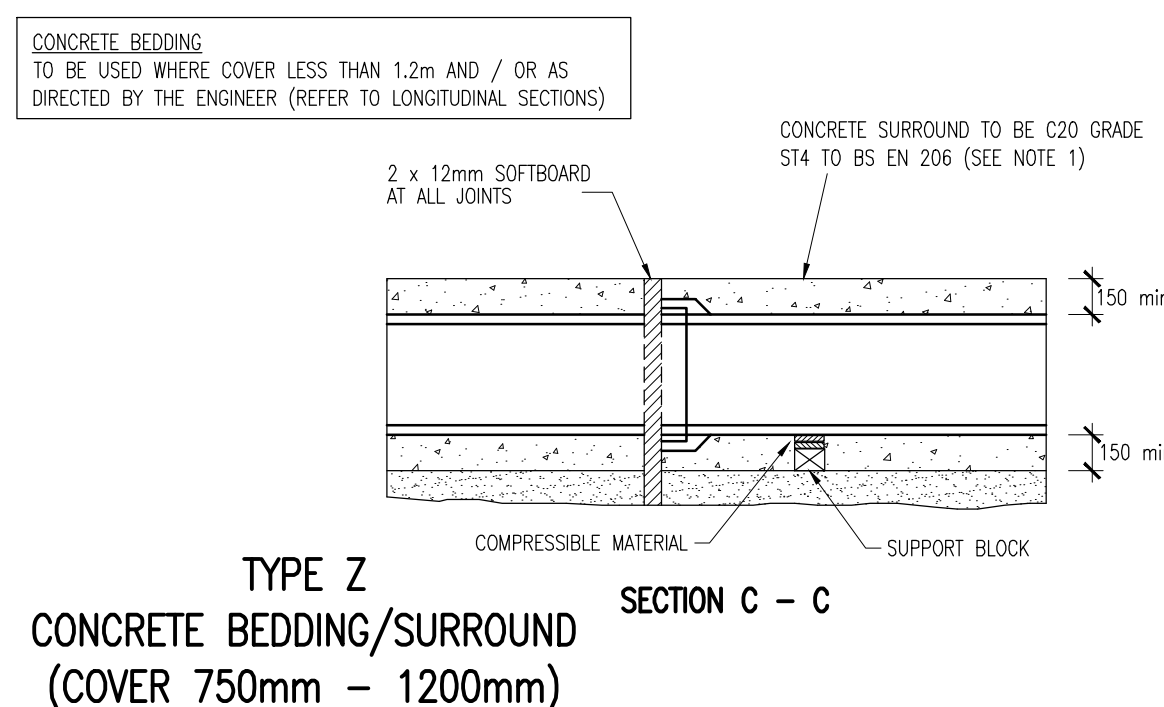
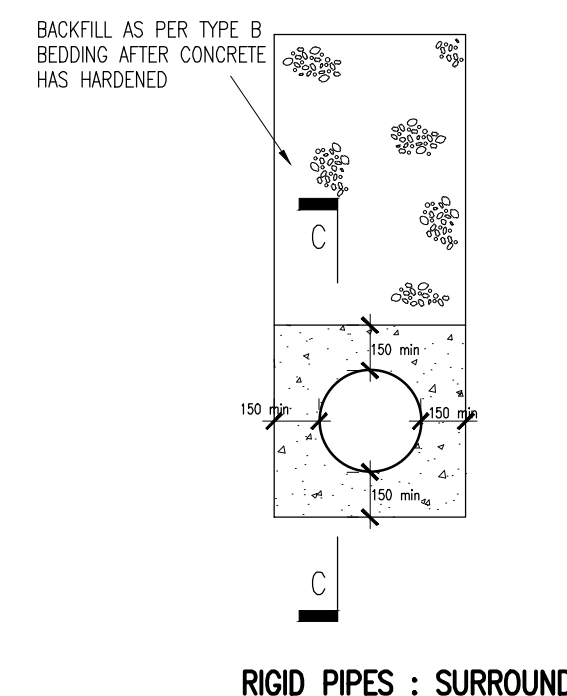
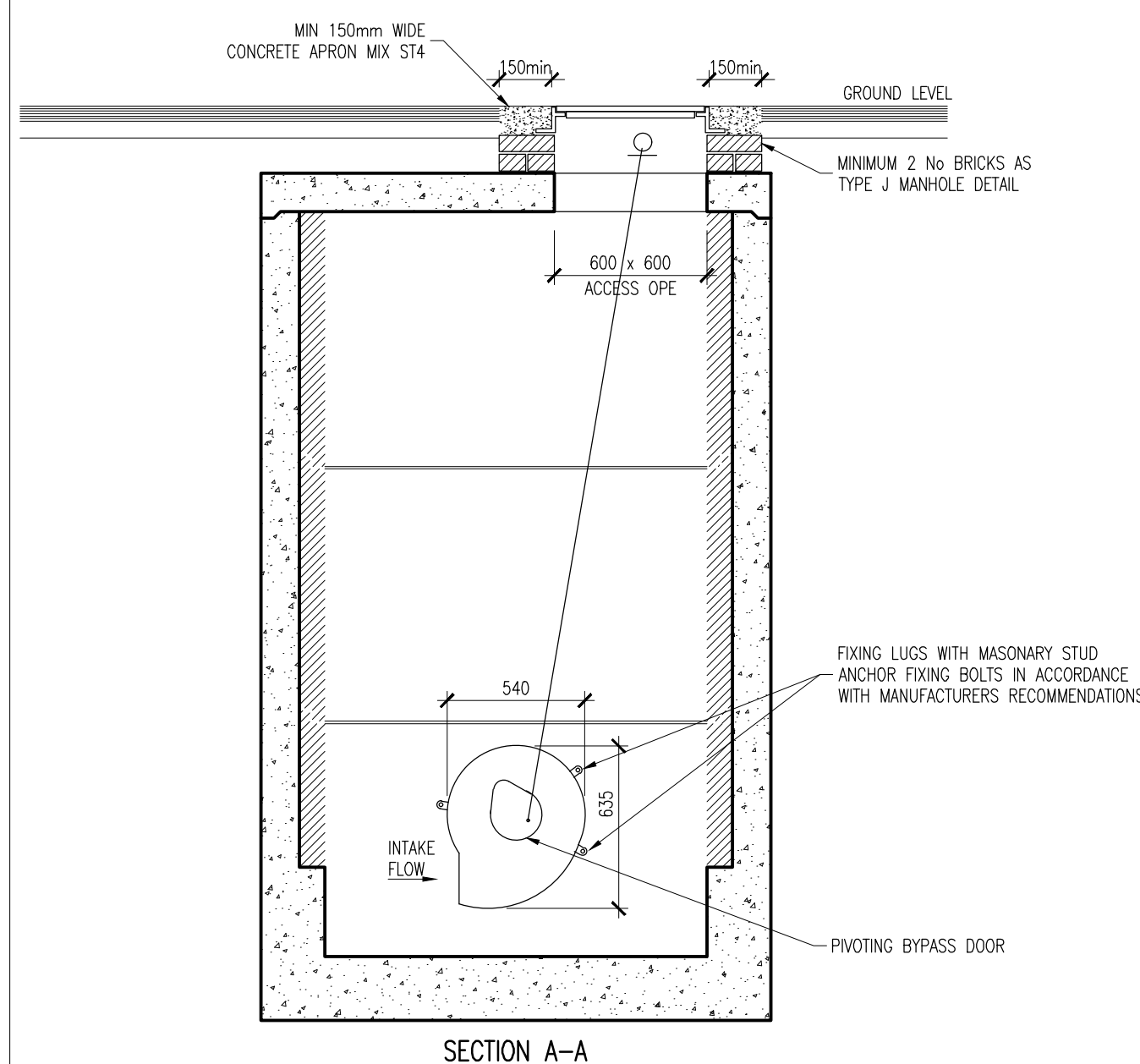


PLAN

DIMENSIONS						
UNIT REF No.	NOMINAL FLOW	LENGTH	DIAMETER	STD. PIPEØ	APPROX. EMPTY WEIGHT (KG)	FALL ACROSS UNIT
NSBP010	10 L/S	2072	1220	315	160	100



© COPYRIGHT OF THIS DRAWING IS RESERVED BY DBFL CONSULTING ENGINEERS. NO PART SHALL BE REPRODUCED OR TRANSMITTED WITHOUT THEIR WRITTEN PERMISSION.

NO CHANGES OF WHATSOEVER NATURE ARE TO BE MADE TO ANY DETAILS SET OUT OR CONTAINED IN ANY DBFL SPECIFICATIONS OR DRAWINGS UNLESS THE EXPRESS CONSENT HAS BEEN OBTAINED IN ADVANCE, IN WRITING, FROM DBFL

NOTES:

1. ALL WORKS TO BE CONSTRUCTED IN ACCORDANCE WITH NRA SPECIFICATION FOR ROAD WORKS U.N.O.
2. ALL REINFORCED CONCRETE ON THIS DRAWING SHALL BE U.N.O.: 35N20 COVER = 50mm MIN
3. SURFACE FINISHES FOR CONCRETE:
 - CLASS F1 FOR ALL CONCRETE 100mm OR MORE BELOW GROUND LEVEL.
 - CLASS F3 FOR ALL EXPOSED CONCRETE ABOVE 100mm BELOW GROUND LEVEL.
4. ALL EXPOSED CORNERS ON CONCRETE SHALL BE CHAMFERED WITH 25mm x 25mm CHAMFERS.
5. ALL STRUCTURAL CONCRETE (HEADWALLS, RC MANHOLES, PETROL INTERCEPTOR SLABS) TO RECEIVE MC DUR 1680 (OR SIMILAR APPROVED TAP MODIFIED EPOXY RESIN) TO ALL BURRED SURFACES, TO FINISH 100mm BELOW GROUND LEVEL.
6. ALL SEWERS SHALL BE PRESSURE TESTED PRIOR TO BACKFILLING.
7. RIGID PIPES SHALL MEAN CAST OR SPUN IRON, CONCRETE, ASBESTOS CEMENT OR CLAY.
8. CLASS D400 MANHOLE COVER FRAMES TO BE 150mm DEEP IN ROADS AND 100mm DEEP IN FOOTPATHS AND GREEN AREAS.
9. ALL AGGREGATES PROPOSED FOR USE ON THIS SCHEME SHALL MEET FULLY THE REQUIREMENTS OF THE NRA SPECIFICATION FOR ROAD WORKS AND IN ADDITION THE REQUIREMENTS STATED IN STANDARD RECOMMENDATION S.R. 21-214 GUIDANCE ON THE USE OF U.S. EN 12542:2007 +A1:2007-AGGREGATES FOR UNBARD AND HYDRAULICALLY BOUND MATERIALS FOR USE IN CIVIL ENGINEERING WORK AND ROAD CONSTRUCTION.
10. ALL FOUL SEWERS, MANHOLES, AND CONNECTIONS TO BE CONSTRUCTED IN ACCORDANCE WITH IRISH WATER CODE OF PRACTICE AND STANDARD DETAILS.
11. ALL SURFACE WATER SEWERS, MANHOLES, AND CONNECTIONS TO BE CONSTRUCTED IN ACCORDANCE WITH THE DUBLIN DUBLIN REGIONAL CODE OF PRACTICE FOR DRAINAGE WORKS.

FLOW CONTROL MANHOLE DETAIL
SCALE 1:25

PIPE BEDDING DETAILS

SCALE 1:25

ROAD GULLY DETAILS

SCALE 1:25

0	08-05-24	First Issue	PJ	Hv
rev	date	description	by	chk

STATUS CODES	
purpose	acceptance
P1 - INFORMATION	S - ISSUED

DBFL
CONSULTING ENGINEERS

T: + 353 1 400 4000 | E: info@dbfl.ie | W: www.dbfl.ie

DUBLIN | CORK | GALWAY | WATERFORD

project ref.

BLESSINGTON LRD

drawing title

TYPICAL SURFACE WATER
DRAINAGE DETAILS SHEET 2

clien

MARSHALL YARDS DEVELOPMENT
COMPANY LTD'

designed by HvH	author PJ	scale AS NOTED	sheet size A1
drawing no. 230199-X-91-Z00-DTM-DR-DBFL-CE-5302			revision 0