



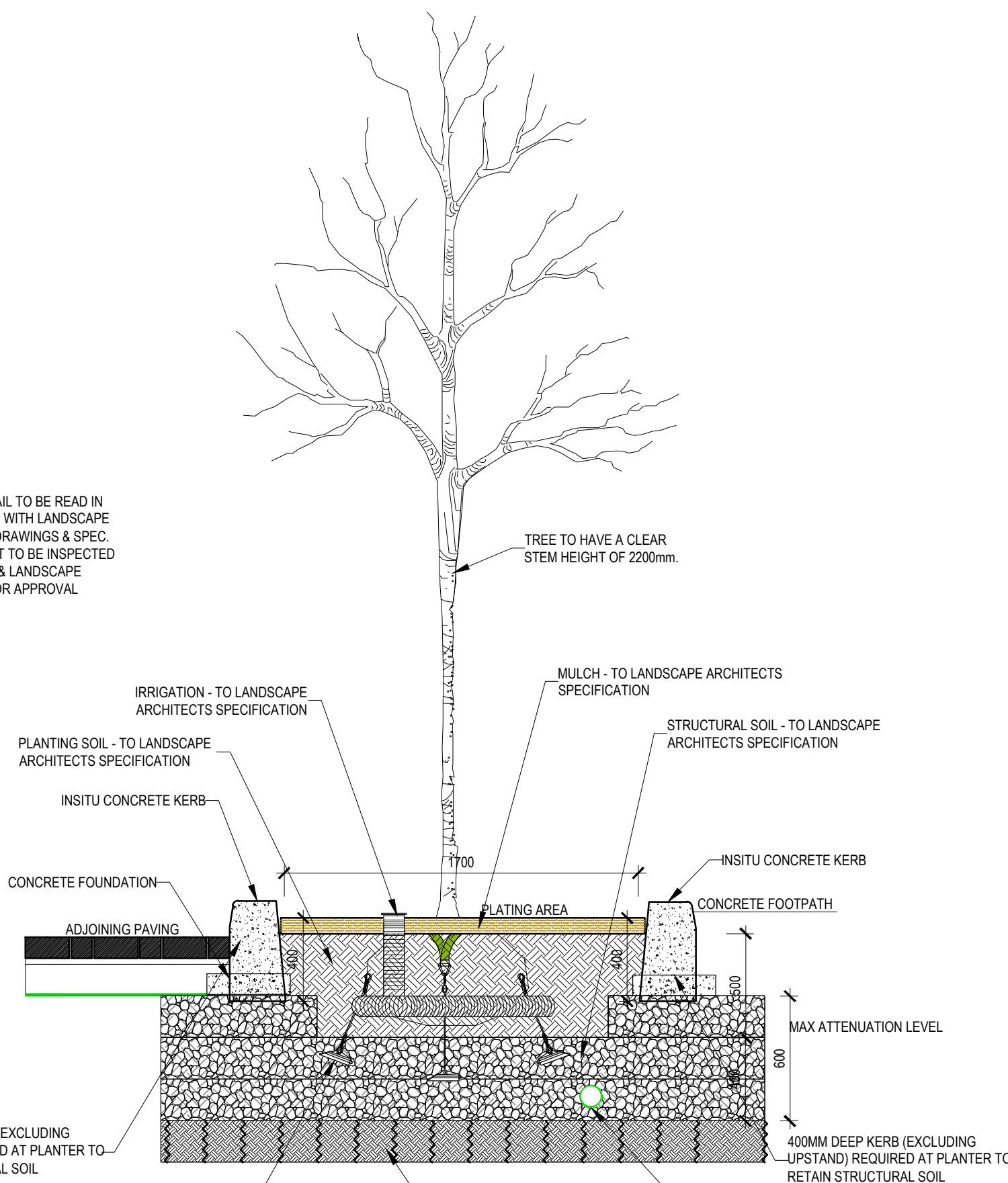
© COPYRIGHT OF THIS DRAWING IS RESERVED BY DBFL CONSULTING ENGINEERS. NO PART SHALL BE REPRODUCED OR TRANSMITTED WITHOUT THEIR WRITTEN PERMISSION.

NO CHANGES OF WHATSOEVER NATURE ARE TO BE MADE TO ANY DETAILS SET OUT OR CONTAINED IN ANY DBFL SPECIFICATIONS OR DRAWINGS UNLESS THE EXPRESS CONSENT HAS BEEN OBTAINED IN ADVANCE, IN WRITING, FROM DBFL.

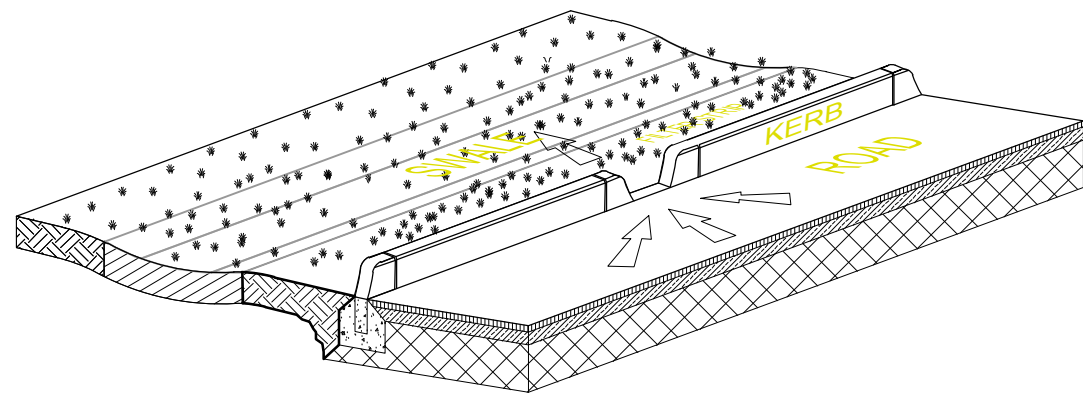
NOTES:

- WHERE ROCKS OR OTHER HARD TRENCH BOTTOM IS ENCOUNTERED, THE FIGURE DENOTED BY * IS TO BE DOUBLED.
- TYPE 1 GRANULAR MATERIAL : BROKEN STONE OR GRAVEL TO PASS 10mm SIEVE AND BE RETAINED ON 5mm SIEVE.
- TYPE 2 GRANULAR MATERIAL : BROKEN STONE OR GRAVEL TO PASS 10mm - 25mm SIEVE, ACCORDING TO PIPE SIZE, (SEE TABLE) AND BE RETAINED ON 5mm SIEVE.
- CLAUSE 601 S.R.W. BACKFILL : UNIFORM READILY COMPACTED MATERIAL FREE FROM TREE ROOTS, VEGETABLE MATTER, BUILDING DEBRIS, AND FROZEN SOIL AND EXCLUDING CLAY LUMPS RETAINED ON A 75mm SIEVE AND STONES RETAINED ON A 37.5mm SIEVE.
- RIGID PIPES SHALL MEAN CAST OR SPUN IRON, CONCRETE OR CLAY.
- GULLY GRATINGS AND FRAMES SHALL COMPLY WITH THE REQUIREMENTS OF I.S./E.N./124 1994. GULLIES SHALL BE CLASS D400.
- GULLY WALLS SHALL BE CONSTRUCTED IN CLASS 30N/mm² PRECAST OR INSITU CONCRETE OR ALTERNATIVELY IN SOLID CONCRETE BLOCKS DESIGNATED S10, STRENGTH 10N/mm²
- ALL PIPES TO BE BEDDED IN ACCORDANCE WITH MANUFACTURERS RECOMMENDATIONS
- SURFACE WATER SEWERS TO BE CLASS H CONCRETE TO IS EN1916 AND IS 6 2004.
- FOUL SEWERS TO BE uPVC PIPES TO COMPLY WITH THE 'PROVISIONAL SPECIFICATIONS FOR SOIL PIPES, DRAINS, SEWERS AND FITTINGS MADE OF UNPLASTICISED P.V.C.' ISSUED BY THE DEPARTMENT OF THE ENVIRONMENT AND THE GRATER DUBLIN REGIONAL CODE OF PRACTICE FOR DRAINAGE WORKS V6.0.

NOTE:
TREE PIT DETAIL TO BE READ IN CONJUNCTION WITH LANDSCAPE ARCHITECTS DRAWINGS & SPEC.
FIRST TREE PIT TO BE INSPECTED BY ENGINEER & LANDSCAPE ARCHITECT FOR APPROVAL

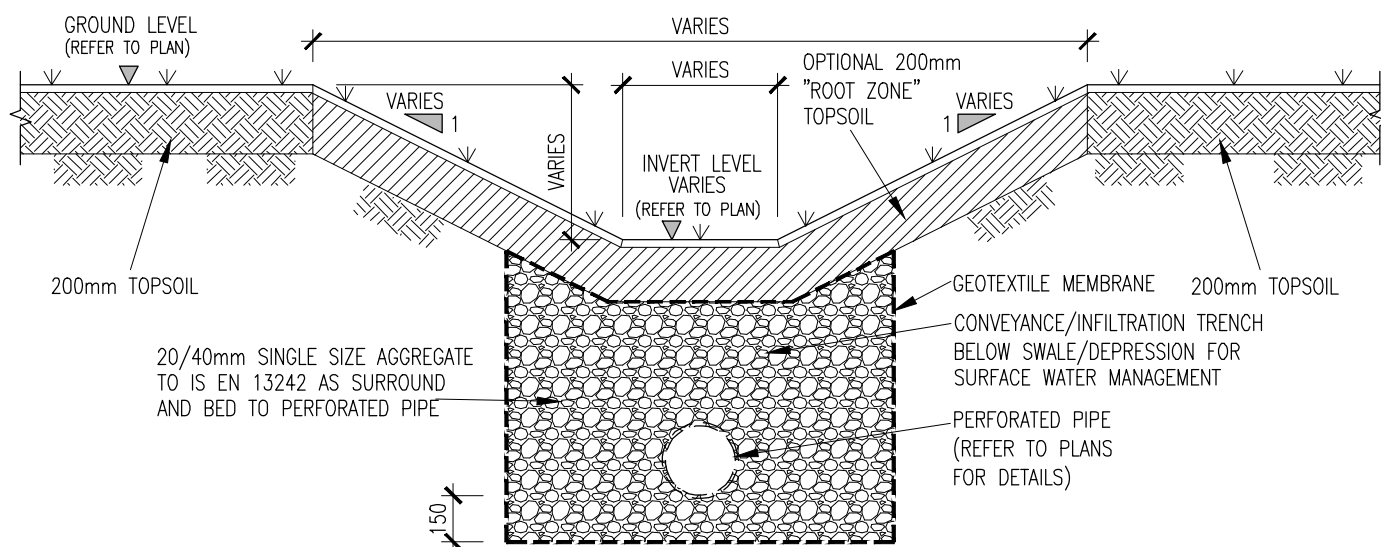


TYPICAL TREE PIT DETAIL
SCALE 1:25

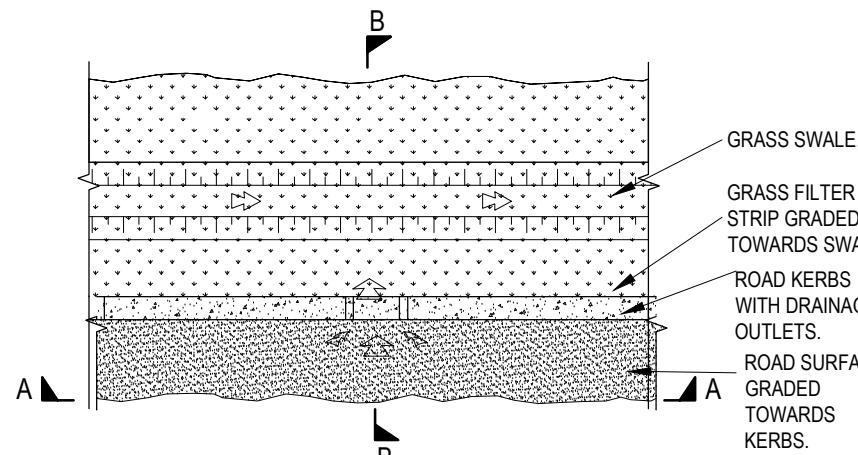


SCHEMATIC LAYOUT
SCALE: N.T.S.

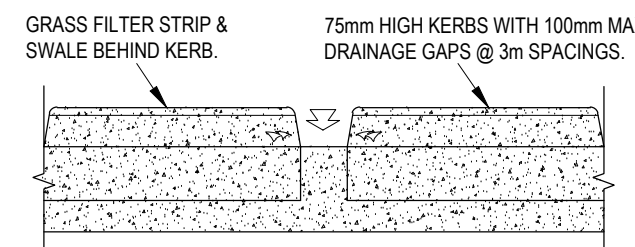
TYPICAL ROADSIDE LATERAL KERB INLET (NON-CONTINUOUS KERB)



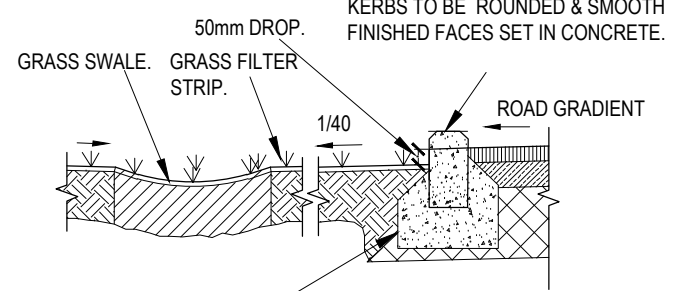
TYPICAL CONVEYANCE TRENCH BELOW DRY SWALE/DEPRESSION
SCALE: NTS



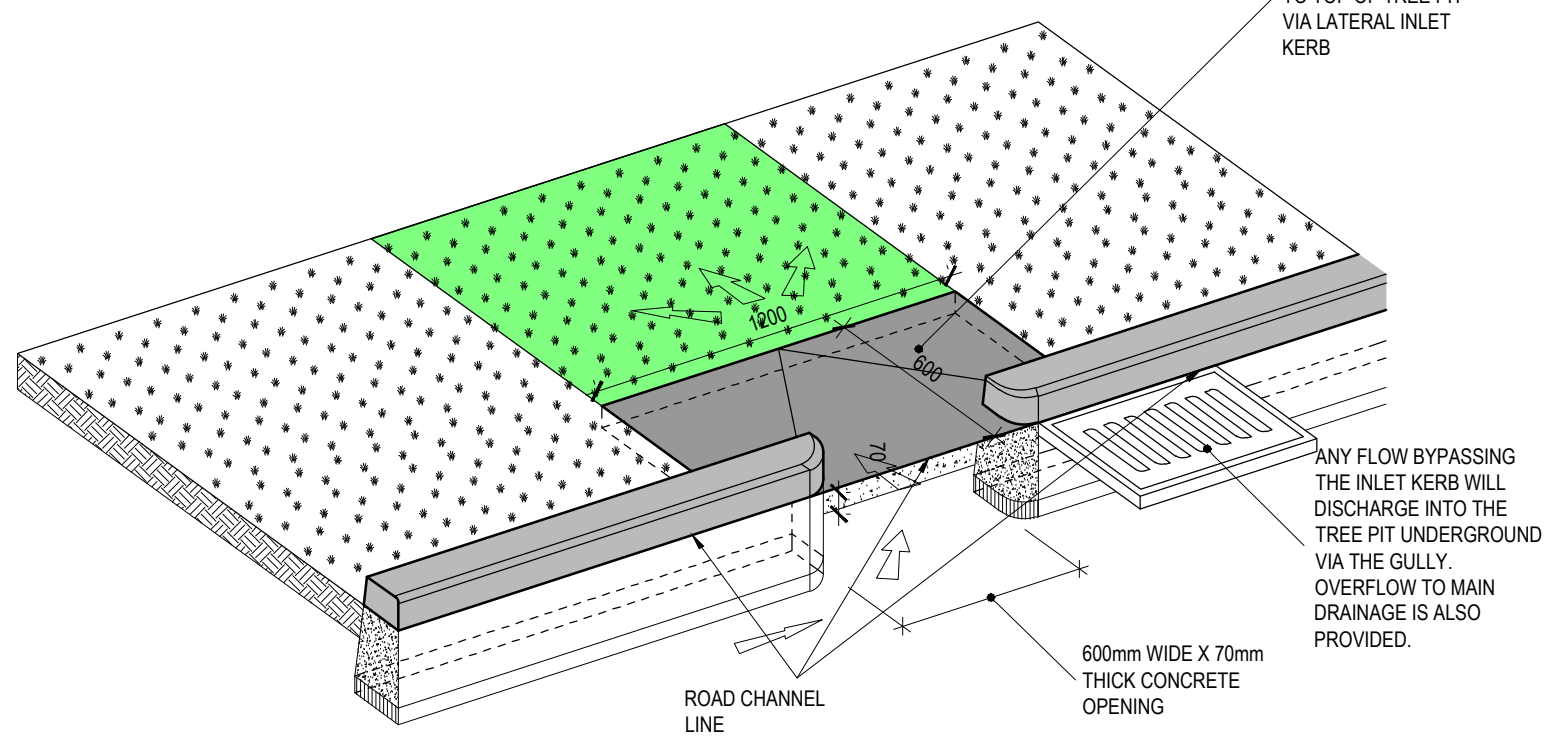
PLAN
SCALE: N.T.S.



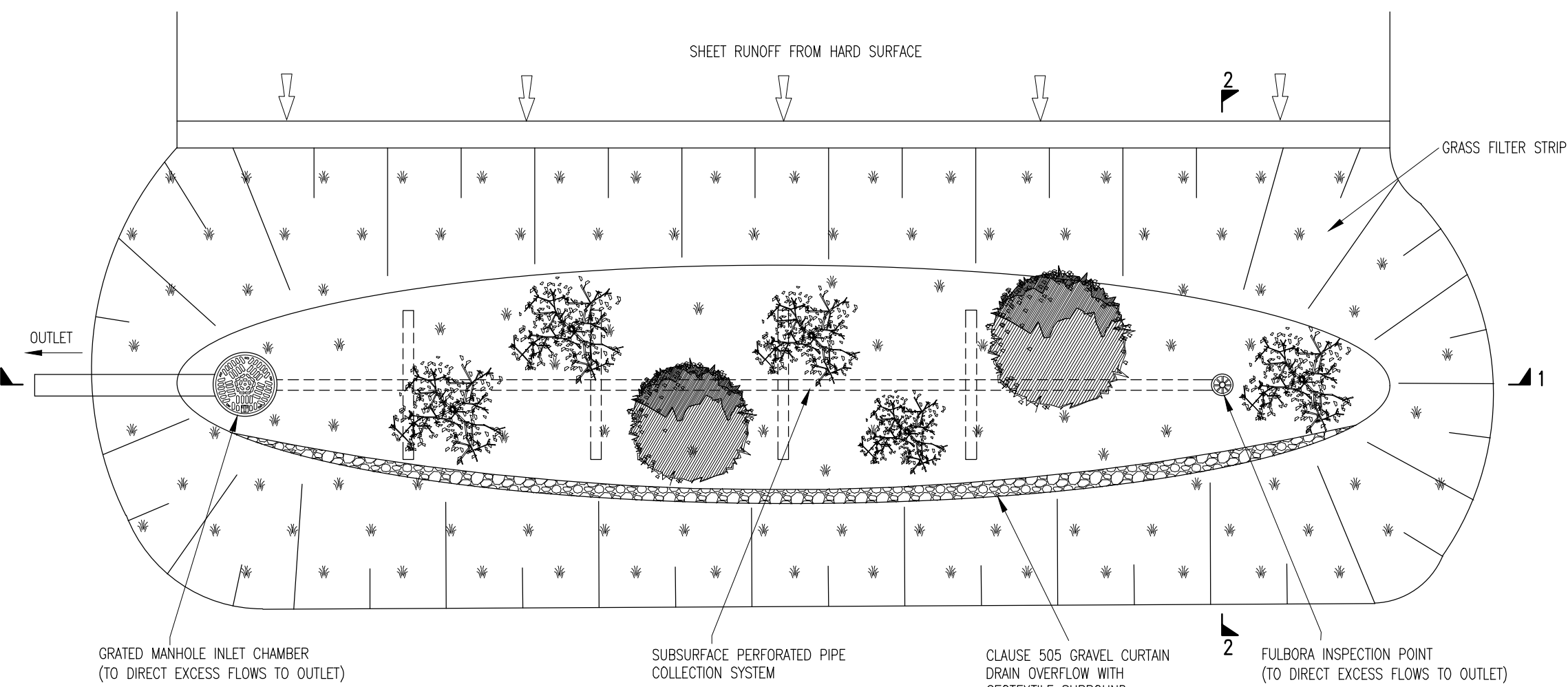
SECTION A-A
SCALE: NTS



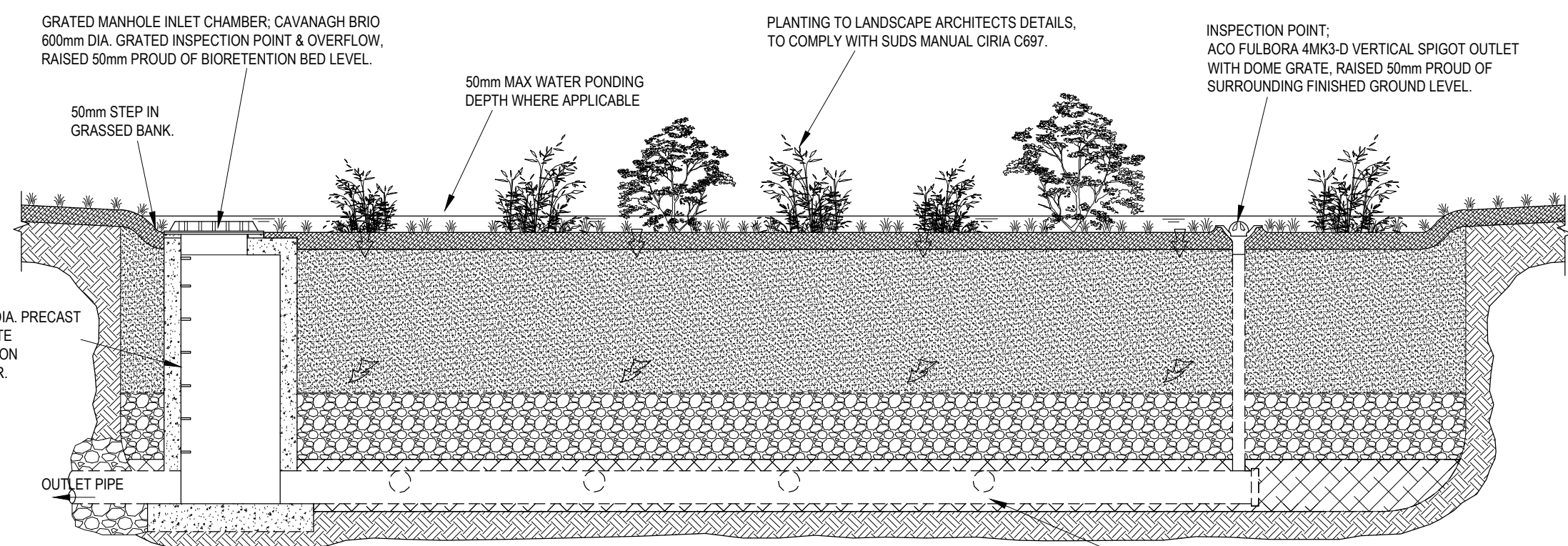
SECTION B-B
SCALE: NTS



LATERAL INLET KERB CONNECTING TO TREE PIT
SCALE 1:25



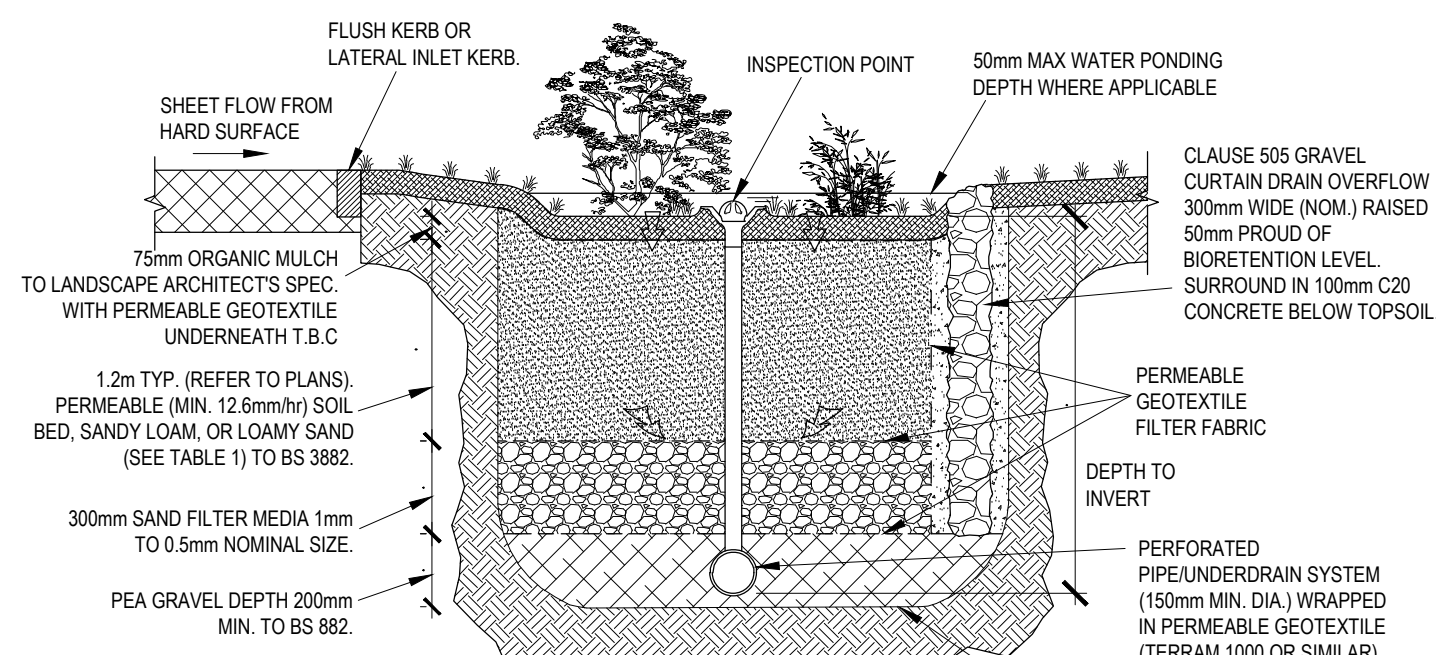
PLAN



SECTION 1-1

TABLE 1	
COMPONENT	PERCENTAGE MIXTURE
SAND	35-60%
SILT	30-50%
CLAY	10-25%
ORGANIC	0-4%
MATTER	-

TOP SOIL



SECTION 2-2

BIORETENTION AREA/RAIN GARDEN - SCHEMATIC LAYOUT

SCALE: N.T.S.

0	03-05-24	ISSUED FOR PLANNING	JUB	SPB
rev	date	description	by	chkd.

STATUS CODES	
purpose	acceptance
P3 - PLANNING PERMISSION	S - ISSUED

DBFL
CONSULTING ENGINEERS

T: +353 1 400 4000 | E: info@dbfl.ie | W: www.dbfl.ie
DUBLIN | CORK | GALWAY | WATERFORD

project ref.

BLESSINGTON LRD

drawing title

TYPICAL SURFACE WATER DRAINAGE DETAILS SHEET 4

client

MARSHALL YARDS DEVELOPMENT COMPANY LTD

designed by: XXX author: HwH scale: VALUE sheet size: A1

drawing no. 230199-X-91-200-DTM-DR-DBFL-CE-5304 revision: 0